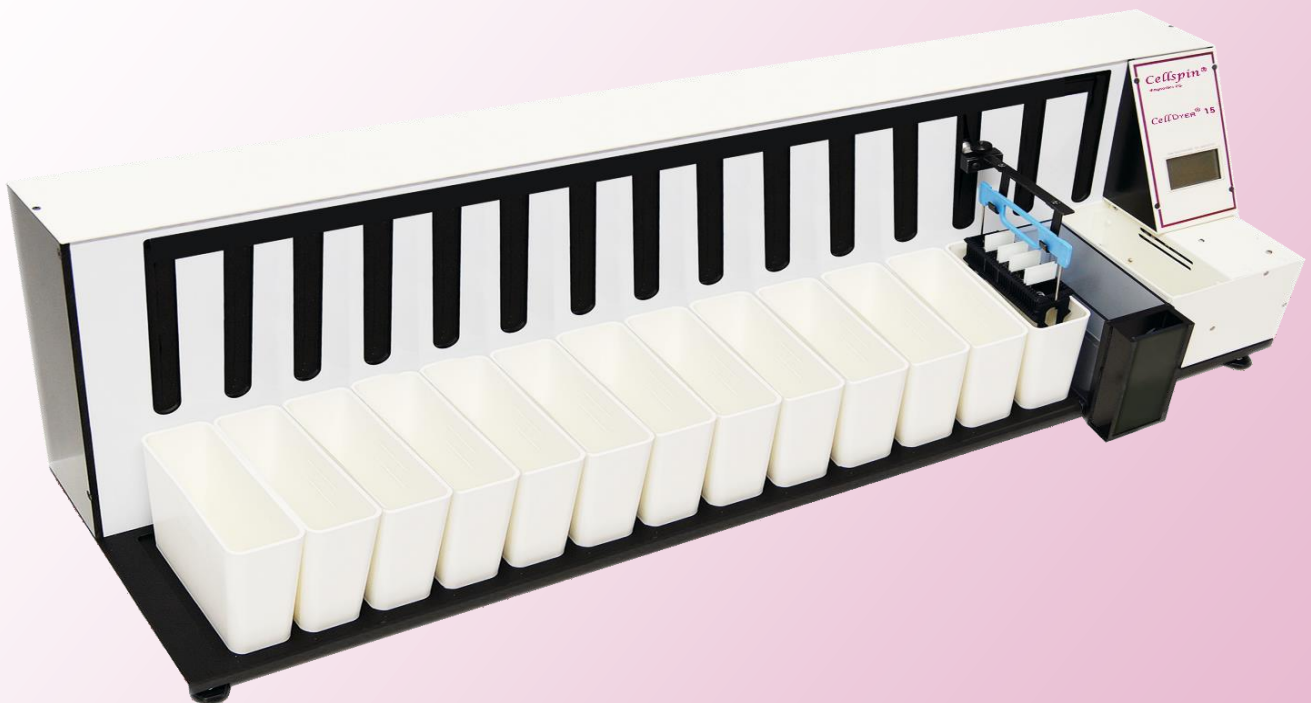


# CellStain®

... our successful staining system



For optimal results in dyeing cells in these areas:

- Bacteriology
- Haematology
- Histology
- Microbiology
- Cytology

## Our CellStain® stainers

---

The CellStain® – line consists of four models:

- CellStain® 6
- CellStain® 7
- CellStain® 15
- CellStain® 23

Each stainer is a reliable partner for your laboratory.

Advantages of our stainers are:

- **Size** – spacesaving format
- **Efficiency** – up to 30 slides per staining run
- **Flexibility** – freely programmable memory
- **Price** – excellent price-performance ratio

The integrated Touchscreen enables a fast and comfortable operation.

# CellStain® 6

## Application area of CellStain® 6:

### Haematology

Staining of blood and marrow according to:

- May-Grünwald
- Giemsa
- Wright
- Pappenheim
- Leishman

### Bacteriology

- Gram staining
- Fluorescence staining and cold staining of Mycobacterium tuberculosis

The CellStain® 6 is equipped with 6 staining stations.

Therefore selectable troughs and slide holders are available for 8, 20 or 30 slides.

Additional advantages of CellStain® 6:

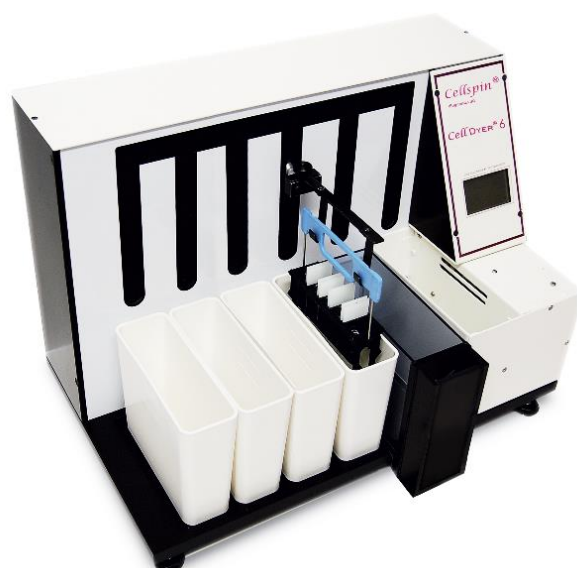
- Program safety because of password protected access
- Less reagent abduction due to the slide holder
- Free selectable agitation time and dripping of time for additional minimization of reagent abduction
- Implementation of different stainings due to forwards and backwards movement of slide holder
- Small-sized format of stainer fits under all desk fumes
- Optional dryer unit with adjustable temperature
- Optional water rinse station

Furnishing:

- Slide holder for 8, 20 or 30 slides
- 6 troughs (standard) for 500 ml with lid
- 1 optional water rinse station
- Storage place for 25 staining programs for up to 30 steps each

Technical data:

- Dimension and weight: 55 x 34 x 28 cm (w x h x d)  
approx. 15 kg
- Safety: CE /IVD certified
- Voltage: 100-127V / 60Hz 208-240V / 50Hz



# CellStain® 7

## Application area of CellStain® 7:

### Haematology

Staining of blood and marrow according to:

- May-Grünwald
- Pappenheim
- Leishman

### Bacteriology

- Gram staining

The CellStain® 7 is equipped with 7 staining stations.  
Therefore selectable trough and slide holder is available for 24 slides.

### Additional advantages of CellStain® 7:

- Program safety due to preinstalled programs
- Short dripping time for less reagent abduction
- Small-sized format of stainer fits under all desk fumes
- Optional dryer unit with adjustable temperature
- Optional water rinse station

### Furnishing:

- Slide holder for 24 slides
- 6 troughs (standard) for 250 ml with lid
- 1 optional water rinse station
- 1 optional dryer unit
- 4 preinstalled programs

### Technical data:

- Dimension and weight: 49 x 30 x 16 cm  
(w x h x d)  
approx. 6 kg
- Safety: CE /IVD certified
- Voltage: via power supply 12V DC



# CellStain® 15

## Application area of CellStain® 15:

### Papanicolaou-staining

The CellStain® 15 is equipped with 15 staining stations.

Therefore selectable troughs and slide holders are available for 20 and 30 slides.

### Additional advantages of CellStain® 15:

- Programming unit for individually adjustable steps in staining-, rinsing- and drying stations
- Program safety because of password protected access
- Less reagent abduction due to the slide holder
- Free selectable agitation time and dripping of time for additional minimization of reagent abduction
- Implementation of different stainings due to forwards and backwards movement of slide holder
- Optional dryer unit with adjustable temperature

### Furnishing:

- Slide holder for 20 and 30 slides
- 15 troughs (standard) for 500 ml with lid
- Up to optional 2 water rinse stations
- Storage place for 25 staining programs for up to 30 steps each

### Technical data:

- Dimensions and weight: 95 x 35 x 28 cm (w x h x d) approx. 16 kg
- Safety: CE / IVD certified
- Voltage: 100-127V / 60Hz 208-240V / 50Hz



# CellStain® 23

## Application area of CellStain® 23:

### Feulgen staining

- DNA-picturecytometrie
- DNA-karyometrie

### HE-staining

### Papanicolaou-staining

The CellStain® 23 is equipped with 23 staining stations.

Therefore selectable troughs and slide holders are available for 30 slides.

## Additional advantages of CellStain® 23:

- Programming unit for individually adjustable steps in staining-, rinsing- and drying stations
- Program safety because of password protected access
- Less reagent abduction due to the slide holder
- Free selectable agitation time and dripping of time for additional minimization of reagent abduction
- Implementation of different stainings due to forwards and backwards movement of slide holder

## Furnishing:

- Slide holder for 30 slides
- 23 troughs (standard) for 500 ml with lid
- Up to optional 4 water rinse stations
- Storage place for 20 staining programs up to 30 steps each
- Optional up to 8 tempered troughs

## Technical Data:

- Dimensions and weight: 160 x 35 x 28 cm (w x h x d) approx. 25 kg
- Safety: CE / IVD certified
- Voltage: via power supply 12V DC



## Devices and Accessories

### *Cell*DYER® / CellStain® 6

Article-No.	Description
651-30	<b>CellStain® 6</b> with 6 troughs (standard) for 500 ml with lid slide holder for 30 slides and shortened trough (standard) for loading and unloading
652-20	<b>CellStain® 6</b> with 6 troughs (180 ml) and slide holder for 20 slides
655-08	<b>CellStain® 6</b> with 6 troughs and slide holder for 8 slides (for less reagent)
653	Slide dryer, adjustable from 40°C – 80°C (optional)
654	Water rinse station (optional)
675	Pressure regulator for water rinse station
612	Slide holder for 30 slides
621	Trough (standard) for 500 ml with lid
658	Slide holder for 20 slides
689	Side holder for 8 slides (for less reagent)
686	Trough for 20 slides
690-06	Desk fume hood for <b>CellStain® 6</b> with activated carbon filter
690AK	Activated carbon filter

## Devices and Accessories

### *Cell* DYER® / CellStain® 7

Article-No.	Description
685	<b>CellStain® 7</b> with 6 troughs (standard) for 240 ml with lid and slide holder for 24 slides
686	Trough (standard) for 240 ml with lid
687	Slide holder for 24 slides
688	Water rinse station (optional)
675	Pressure regulator for water rinse station
690-06	Desk fume hood for <b>CellStain® 7</b> with activated carbon filter
690AK	Activated carbon filter

### *Cell* DYER® / CellStain® 15

Article-No.	Description
665-20	<b>CellStain® 15</b> with 15 troughs (standard) for 240 ml with lid slide holder for 20 slides
665-30	<b>CellStain® 15</b> with 15 troughs (standard) for 500 ml with lid slide holder for 30 slides and shortened trough (standard) for loading and unloading
654	Water rinse station (optional)
675	Pressure regulator for water rinse station
612	Slide holder for 30 slides
621	Trough (standard) for 500 ml with lid
653	Slide dryer, adjustable from 40°C – 80°C (optional)
690-15	Desk fume hood for <b>CellStain® 15</b> with activated carbon filter
690AK	Activated carbon filter



## Devices and Accessories

### *Cell* DYER® / CellStain® 23

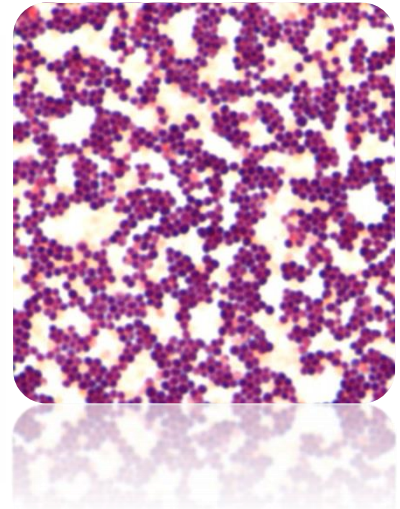
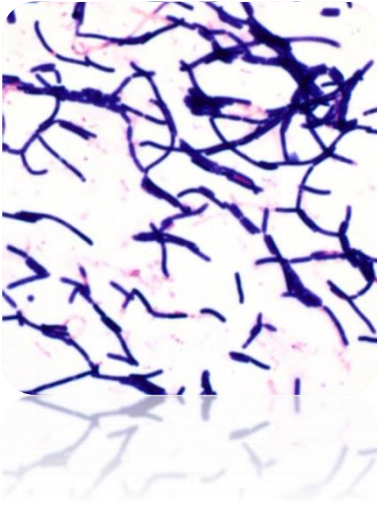
Article-No.	Description
800-30	CellStain® 23 with 23 troughs (standard) for 500 ml with lid slide holder for 30 slides shortened trough (standard) for loading and unloading
654	Water rinse station (optional)
675	Pressure regulator for water rinse station
612	Slide holder for 30 slides
621	Trough (standard) for 500 ml with lid
653	Slide dryer, adjustable from 40°C – 80°C (optional)
702	Heating module with one heating trough
703	Additional heating trough per station
690-23	Desk fume hood for CellStain® 23 with activated carbon filter
690AK	Activated carbon filter

### *Cell* DYER® / CellStain® 23 - Feulgen

Article-No.	Description
800-30	CellStain® 23 - Feulgen Basic unit with built-in Feulgen-trough 23 troughs (standard) for 500 ml with lid water rinse station slide holder for 30 slides
612	Slide holder for 30 slides
621	Trough (standard) for 500 ml with lid
702	Heating module with one heating trough
703	Additional heating trough per station
690-23	Desk fume hood for CellStain® 23 - Feulgen with activated carbon filter
690AK	Activated carbon filter

# Staining results with CellStain® stainers

## Gram staining:



## PAP staining:

