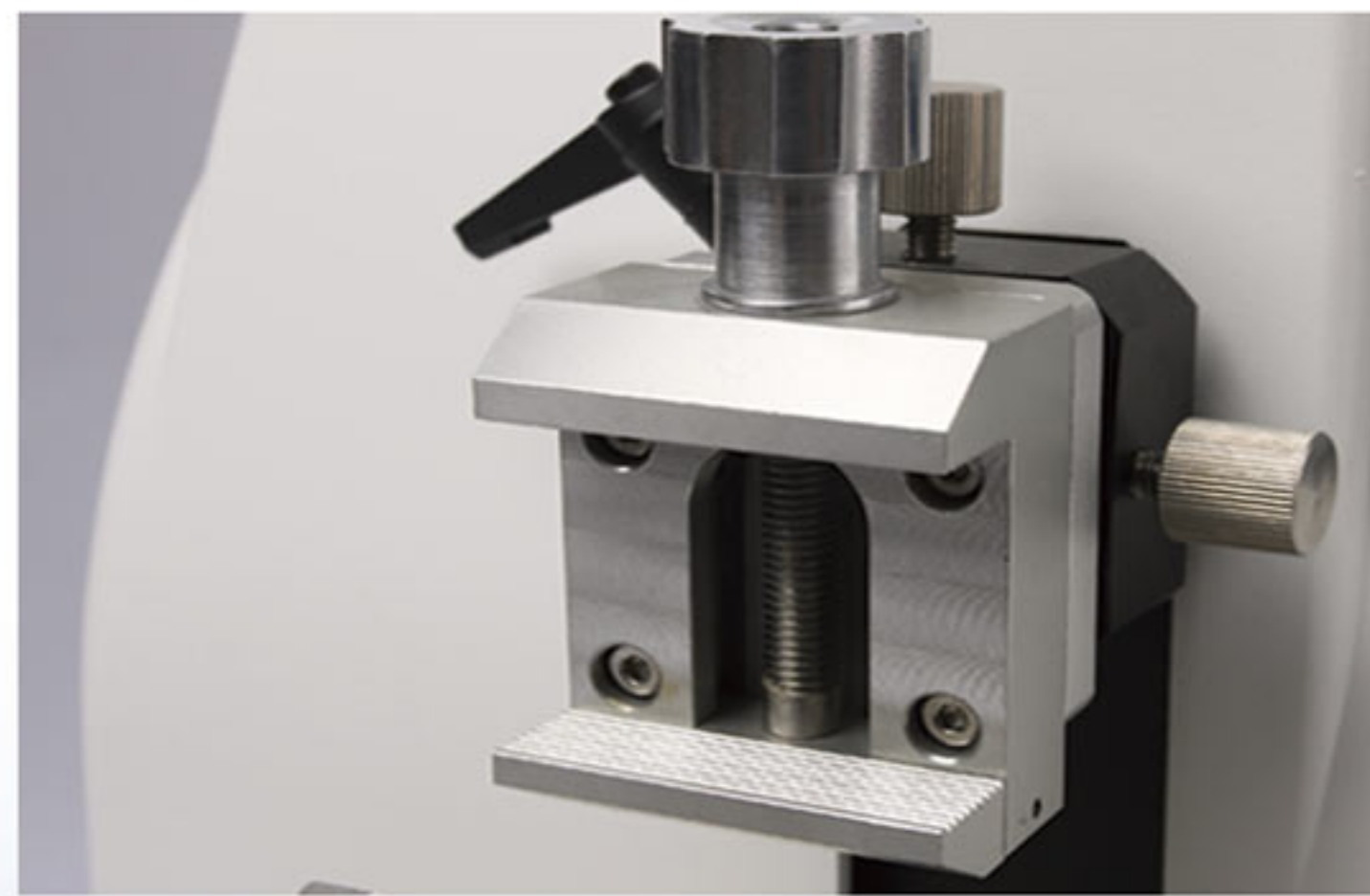
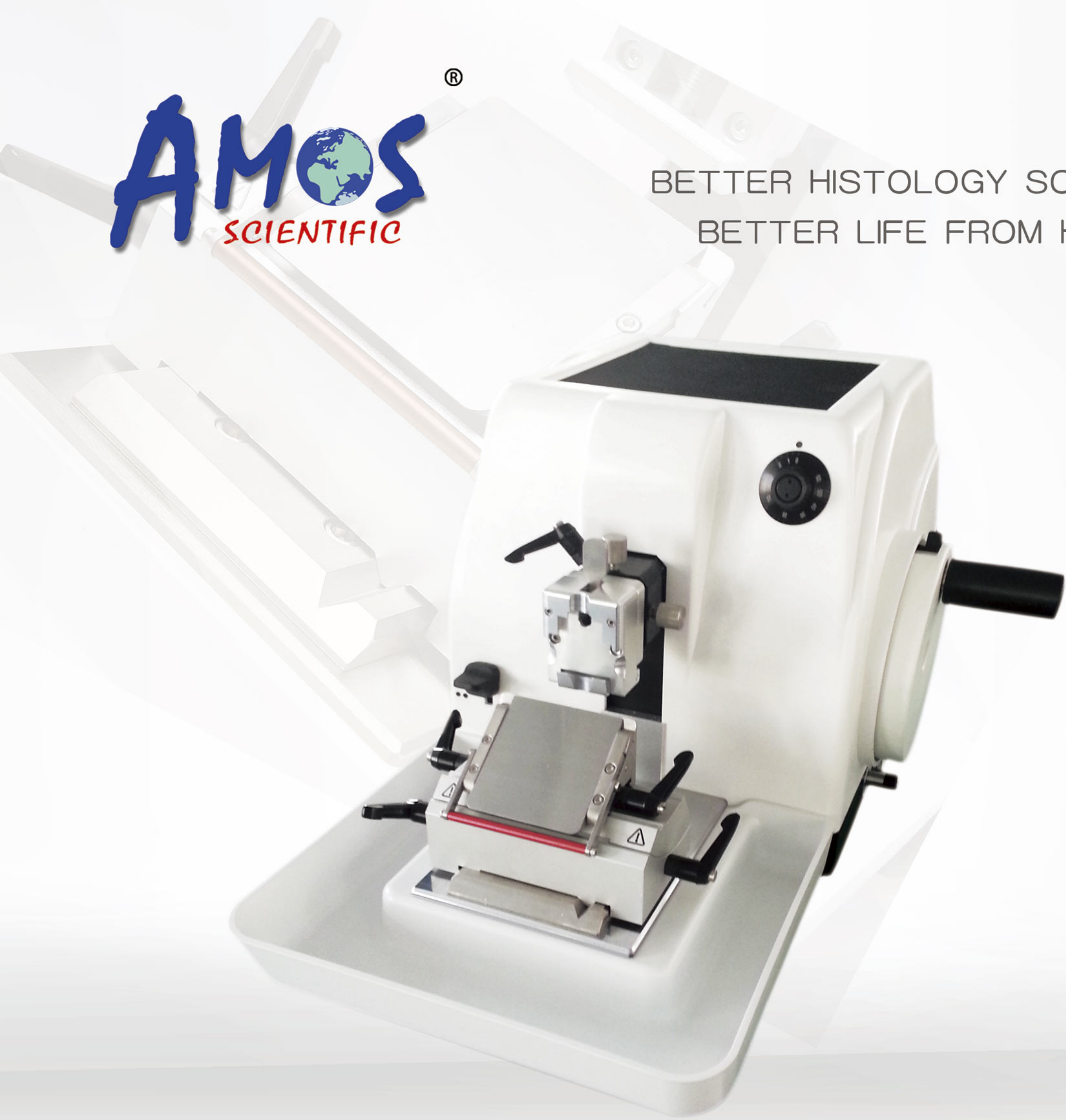




BETTER HISTOLOGY SOLUTION  
BETTER LIFE FROM HEALTH



# AMR 400 MANUAL ROTARY MICROTOME



## Design Features

- Spacious magnetized section waste tray
- Ergo–handwheel handle
- Convenient storage area on top of instrument
- Disposable blade holder with integrated safety finger protection guard
- Two handwheel locks : handwheel can be locked at any position
- Distortion–resistant base plate ensures optimum overall stability
- Both low & high profile disposable blade are usable
- Two types of specimen clamp : standard specimen clamp and “C” type specimen clamp
- Retraction function : 220 $\mu$ m , could be turned on/off
- Extremely smooth running force compensation system

## Technical Specifications

- Section thickness setting : 0 $\mu$ m ~ 60 $\mu$ m adjustable
  - 0 $\mu$ m ~ 2 $\mu$ m, in 0.5 $\mu$ m increments;
  - 2 $\mu$ m ~ 10 $\mu$ m, in 1 $\mu$ m increments;
  - 10 $\mu$ m ~ 20 $\mu$ m, in 2 $\mu$ m increments;
  - 20 $\mu$ m ~ 60 $\mu$ m, in 5 $\mu$ m increments;
- Trimming thickness: 10~50 $\mu$ m adjustable
- Retraction range: 150  $\mu$ m , could be turned off
- Maximum specimen size: 50 × 60 × 40 mm or standard cassette
- Specimen vertical stroke: 70 mm
- Specimen horizontal stroke: 28 mm
- Specimen holder adjusted system : Horizontal orientation:  $\pm 8^\circ$   
Vertical orientation :  $\pm 8^\circ$
- Blades holder base repositioning ( left–right) : 50mm
- Advanced feed by rotating left handwheel a circle around : 0.35mm
- Dimensions : Width : 460 mm (310mm without handwheel)  
Depth : 575 mm  
Height : 325 mm
- Weight: about 35 KG

